



FLOW Video AI Solutions

Background

EditShare has partnered with a number of excellent AI solutions providers to add both audio and visual AI services that are designed to streamline the metadata capture workflow, provide additional context to your valuable media and save time while providing increased accuracy.

FLOW Integration

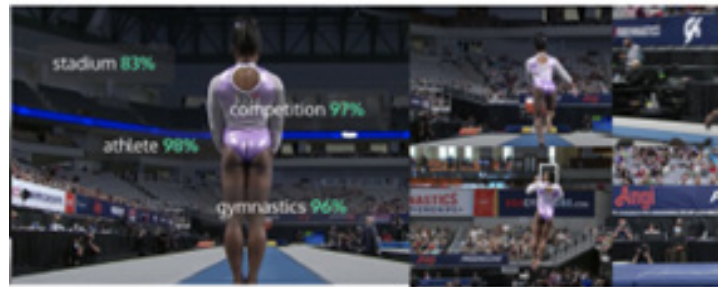
Using FLOW Automation, triggers can be set up for media to be scanned and sent for processing by the various installed AI services. Media will be analyzed and matching metadata is then sent back to FLOW for inclusion in the reference database. This media can be easily searched in FLOW and panel applications making locating relevant assets quick and accurate.



Triggers can be set up for media to be scanned and sent for processing

Video Keywording

Automatically analyzes video content and describes it using a categorized vocabulary of approximately 9500 tags. Differentiators from other computer vision technologies include an intuitive human approach to descriptions as well as a vocabulary that has been built around the varying needs of creative and marketing content.



Video content is automatically analyzed

Shot Detection

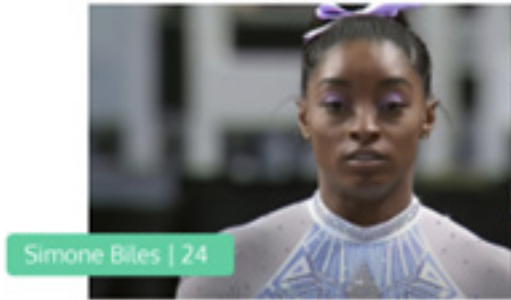
Identifies and segments shots within video content, enabling users to have a more structured access to their media.



Identify and automatically segment shots

Facial Recognition

Saves FLOW users time reviewing and tagging content. Comprehensive database includes thousands of celebrities and public figures. Ability to augment the database with a custom collection of faces for detection.



Database includes thousands of known figures

Audio Transcription

FLOW has partnered with VoicelInteraction which provides ASR (Automatic Speech Recognition) capabilities. Is integrated to Flow as one of the tasks available in Flow Automation.

Audio transcription is an automatic operation and no human intervention is required during the processing phase. This system facilitates the creation of recognition tasks or schedules and produces textual transcription of the given audio source.

There is an included administration interface where you can perform any and all relevant administrative actions. This allows you to create recognition tasks in real time or offline and in an automated way. Working with more than 100,000 words vocabularies and language models trained with texts from different sources.

How to Buy

The FLOW Video AI services: Video Keywording, Shot Detection & Facial Recognition are available in both all-in-one and Enterprise options with packages starting at just a few hundred dollars (USD) a month.

All-in-one options provide access to certain AI services on a subscription basis for the FLOW users licensed in the all-in-one package. Enterprise options are available in both perpetual and subscription license options for unlimited licensed FLOW users. Both platform and feature subscription licenses are required.

Hardware Requirements:

All FLOW Video AI Services require the addition of a FLOW Production node. Please contact your EditShare sales representative for more information.