



EditShare for Education

A new class of **directors, producers and editors** are learning their **craft** at schools, colleges, and universities around the world.

To prepare them for the workforce, educators need to offer a **“real-life” creative environment** – all while managing submissions from 100s of students + offering compatibility across creative tools.

Future directors, producers and editors are currently situated in schools, colleges, and universities around the globe. They are learning the skills to deliver engaging and entertaining video stories and narratives.

Educators want the ability to simulate real life production scenarios, offering students the ability to step into the workforce with all the knowledge they need to succeed.

They have to manage hundreds of students and enable broad compatibility across creative tools so that students can learn a wide variety of skills.

When students graduate, they need to have experienced the realities of working collaboratively across different parts of the media workflow.

Its also critical the students and teachers can submit content, feedback, and approvals from wherever they are, on or off campus.

Why Do Educational Teams Call EditShare?

Faculty managers don't want to wait for a critical outage - an accidental deletion, a power surge, or another cause of failed storage - for teams to re-evaluate "what they need" from their storage solution and they can't risk losing their students valuable work.

More than ever, students need the freedom to experience different creative tools to give them the best chance of being successful in the competitive jobs market.

Educators are busier than ever before so automating processes including alerts to staff when files are placed in specific folders helps to speed up workflows while providing:

- Robust and coherent media management that is easily managed by faculty staff
- Ability to add 500+ users and set up workspaces/ permissions automatically
- Simple auditing functionality to locate student media and 24/7 student access
- Auto creation of proxy video files for offline editing

"We need to protect our student's content"

"How can i make sure content is safe - even if the system goes down?"

"Our students need creative freedom"

"They need to experience as many creative tools as possible to build a wide portfolio of skills"

"We need automated QC workflows"

"Automated student project submission workflows with staff alerts would save so much time"

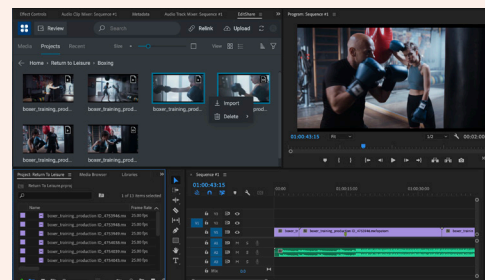
EditShares **EFS** Open Storage Platform and **FLOW** Media management provide educators a storage backbone with integrated media management that connects the various media workgroups and the systems they use.



Media Optimized Storage



Simplified Media Management





NOT JUST
RELIABILITY
SCALABLE
RELIABILITY

EFS Grows with You

With EFS, you can start small and grow exponentially. Thanks to its simple building-block approach, scaling capacity and bandwidth is as easy as plugging in additional storage nodes – and EFS even automatically rebalances your distribution of data. Easily scale up to 10+ Petabytes and beyond all within a single namespace

The Importance of Integration

Advanced APIs enable colleges and universities to deeply integrate systems across the facility and build new workflows that better support the organization as a whole.

Governance capabilities enable IT/Engineering managers to easily and quickly establish user access and permissions for departments, divisions and students via Active Directory and single sign on.

Collaboration and Security

There is no single point of failure across the entire technology stack with high availability to ensure continuous, optimal operations.

Shared storage access eliminates file copying and enables collaboration – optimizing asset use and better supporting fast-turnaround editorial environment.

EFS Configurable Storage Groups lets users mix SSDs and HDDs in the same namespace.

We also deliver tier 2 storage in the form of our EFS 40NL and EFS 60NL for parking media. Ideal for replacing old LTO systems and providing a campus continuity plan. And because its running the same file system, media moves seamlessly between tier 1 and 2 storage.





**TRUE REMOTE
PRODUCTION
WHILE
WORKING
WITH ANY NLE**

Total Flexibility

FLOW is easy-to-use Media Asset Management that works with Avid, Adobe, Final Cut, and Resolve allowing students to use their creative tool of choice.

FLOW indexes + centralizes all of your files regardless of where they sit - making them searchable and accessible through a simple + efficient UI.

One of FLOW's inherent features is remote working - enabling users to be in any location and connection via FLOW to the EFS shared storage, turning your own storage into your own private cloud environments. Utilizing Adobe, Resolve and even Avid to work with your media from any geo location. Ideal for students at home.



How To Get Your MAM System To Do The Work For You

'Ingest Template'

Orchestrate ingest including transcode codec, destination Media Space, add custom metadata, etc. based on source, date or other criteria



Simple Flow Template designer

'Intelligent Archive'

Intelligent archive of previous semester's Media Spaces or based on any selected trigger.



'Move to/from Nearline'

Save on higher-value online storage by automating move to & from lower-cost HDD nearline.



EFS 40NL Nearline Storage

'Push to Univ. SAN/NAS'

FLOW Templates can copy to/FTP push to Generic storage on Campus Network, or Cloud.



'Project Submission / Review Template'

Students publish projects, lecture staff get notification and start interactive review.



'QC & Delivery Automation'

FLOW sends sequence for AQC check - if file passes auto delivery to cloud / Campus Studio Automation / remote broadcaster, etc.

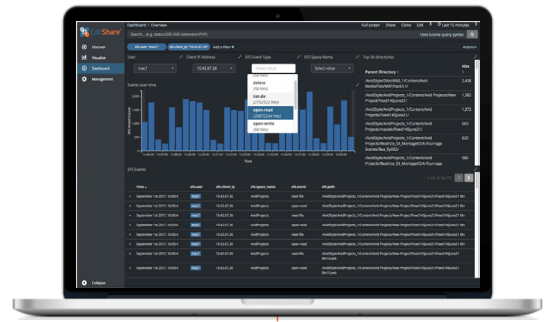


Guardian – The Value of Security and Access Control

Security is paramount when dealing with media. Ransomware, hacks, pirated content are all on the minds of educational establishments. Through the guardian platform, the auditing stack delivers real time analytics about what's happening. The 5 w's - Who has done what to which file when and where.

This is aligned with the EBU best practises of security such as the ebu 148 r and aligned with MPAA/CDSA AND TPN guidelines

Furthermore our solution enables the deployment of solutions such as crowdstrike across servers, minimizing ransomware from outside sources.



Real-time monitoring with customized reporting and dashboards (incl. auditing)

Record user activity such as media space mounts/unmounts and file opens, reads, writes, and deletes

Monitor your CPU, memory, and disk space usage + **auto-forward to your SIEM**

Allows EditShare support to **monitor your system**

Your EditShare System for Education



Storage growth on your terms -

Start small and grow when and how you want - add a node, and your storage automatically rebalances in the background



Creative freedom - Students can use the creative tools they want, and can securely access media from any location.



Permissions-based system and easy project management -

Connect directly into the college campus LDAP system, add/remove users after each semester, and clean up and archive media easily by the year end.

